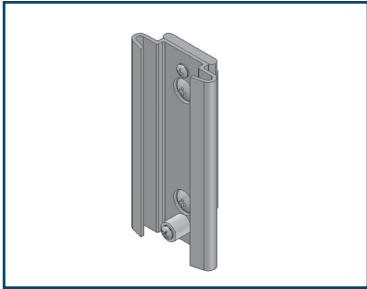


Basis[®] Headwall Accessories Catalog

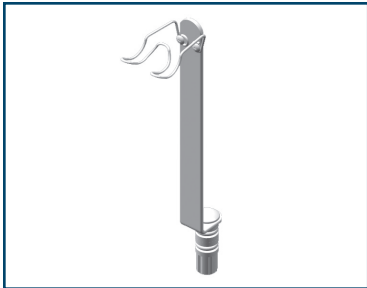


WITTRock
HEALTHCARE



Bottle, Slide (Flush Mount)

Product No. P1020D1



Resuscitator Bag Holder

Product No. P1022PH

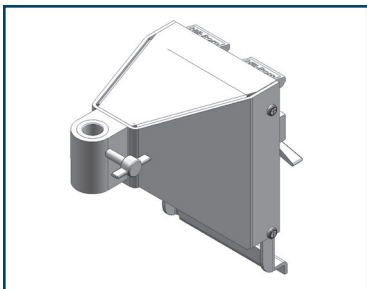
Requires (1) P970A01



**ISS Transfer Pole 32" Long
40 lbs Load 1" DIA**

Product No. P158A

Requires (1) P17000101 (Horizontal),
P17000701 (Vertical) or P976-02

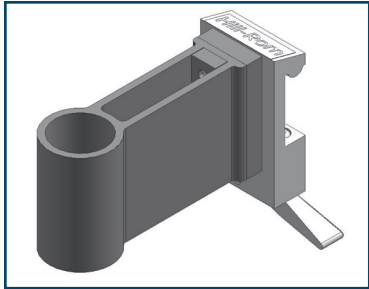


Mount, ISS Transfer Pole

Product No. P17000101

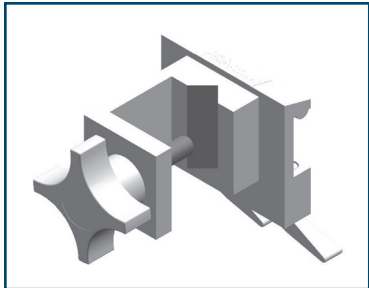
(MOUNT FOR P158A)

HORIZ. 16" (HEIGHT)	HORIZ. 24" (HEIGHT)	HORIZ. 32" (HEIGHT)	VERT. 16" (WIDTH)	VERT. 24" (WIDTH)	VERT. 32" (WIDTH)
YES	YES	YES	YES	YES	YES
YES	YES	YES	YES	YES	YES
YES	YES	YES	YES	YES	YES
YES	YES	YES			



Universal Holder

Product No. P17000601
* Vertical Mount Requires Fairfield Rail



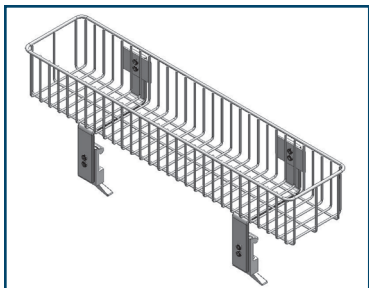
**Universal Pole Holder, C-Clamp
(3/4" TO 1")**

Product No. P17000701
* Vertical Mount Requires Fairfield Rail



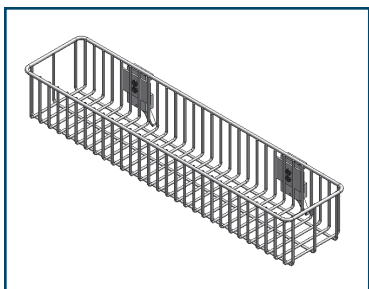
**IV/Resuscitator Hook Dual
(5 lbs per Hook)**

Product No. P17001001
* Vertical Mount Requires Fairfield Rail



**Basket – Stackable
21 3/8"W x 2 7/8"D x 4 5/16"H**

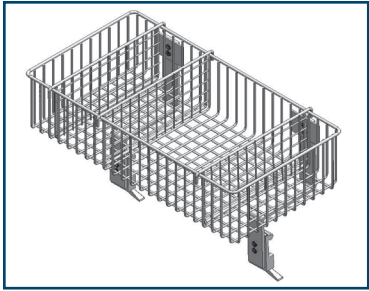
Product No. P17010101



Basket – Stackable

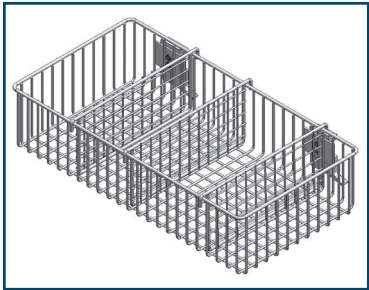
Product No. P17010102
* Vertical Mount Requires Fairfield Rail

HORIZ. 16" (HEIGHT)	HORIZ. 24" (HEIGHT)	HORIZ. 32" (HEIGHT)	VERT. 16" (WIDTH)	VERT. 24" (WIDTH)	VERT. 32" (WIDTH)
YES	YES	YES	YES	YES	YES
YES	YES	YES	YES	YES	YES
YES	YES	YES	YES	YES	YES
YES	YES	YES			
YES	YES	YES	YES	YES	YES



Basket (Over Rail Mount)
18"W x 9 ½"D x 4"H

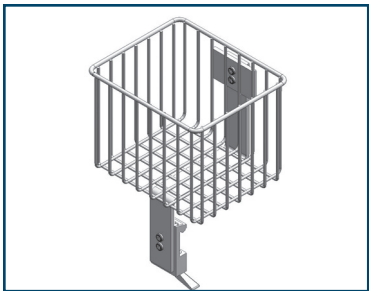
Product No. P17010201



Basket 18"W x 9 ½"D x 4"H
(Front of Rail)

Product No. P17010202

* Vertical Mount Requires Fairfield Rail



Basket (Over Rail Mount)
6 ½"W x 4"D x 5"H

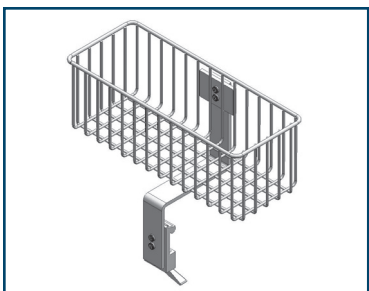
Product No. P17010301



Basket 6 ½"W x 4"D x 5"H
(Front of Rail)

Product No. P17010302

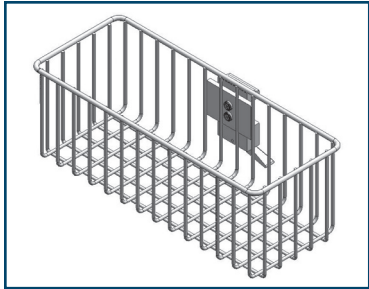
* Vertical Mount Requires Fairfield Rail



Basket (Over Rail Mount)
11"W x 4"D x 4"H

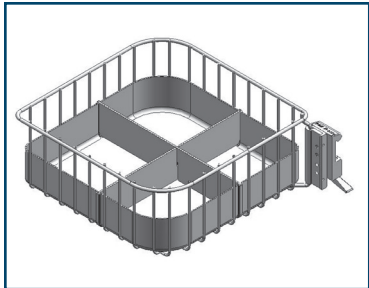
Product No. P17010401

HORIZ. 16" (HEIGHT)	HORIZ. 24" (HEIGHT)	HORIZ. 32" (HEIGHT)	VERT. 16" (WIDTH)	VERT. 24" (WIDTH)	VERT. 32" (WIDTH)
YES	YES	YES			
YES	YES	YES	YES	YES	YES
YES	YES	YES			
YES	YES	YES	YES	YES	YES
YES	YES	YES			



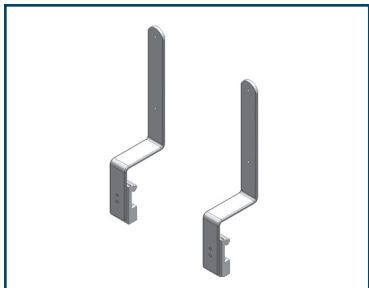
**Basket 11"W x 4"D x 4"H
(Front of Rail)**

Product No. P17010402
** Vertical Mount Requires Fairfield Rail*



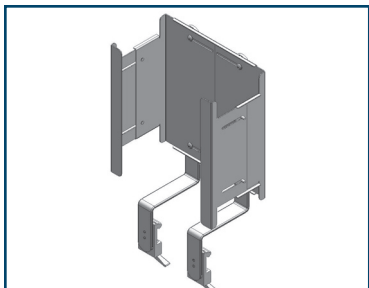
**Basket, Swivel 9 9/16"W x
9 9/16"D x 4"H**

Product No. P17010501
** Vertical Mount Requires Fairfield Rail*



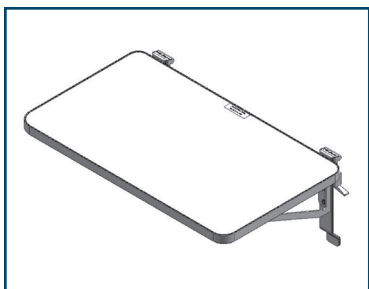
**Sharps Container
(Bolted to Accessory
Over Rail Mount)**

Product No. P17012002



**Glove Box Mount
(Over Rail Mount)**

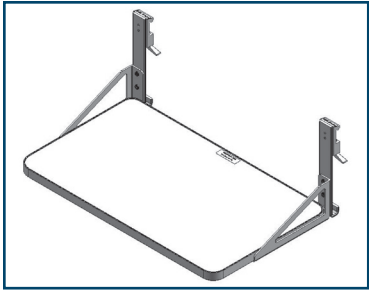
Product No. P17013001



**Utility Shelf 20 3/8"W x
12 1/8"D, 50 lb Load**

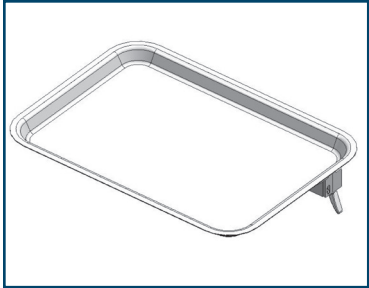
Product No. P17020101

HORIZ. 16" (HEIGHT)	HORIZ. 24" (HEIGHT)	HORIZ. 32" (HEIGHT)	VERT. 16" (WIDTH)	VERT. 24" (WIDTH)	VERT. 32" (WIDTH)
YES	YES	YES	YES	YES	YES
YES	YES	YES	YES	YES	YES
YES	YES	YES			
YES	YES	YES			
YES	YES	YES			



Charting Shelf 20 ³/₈\"/>

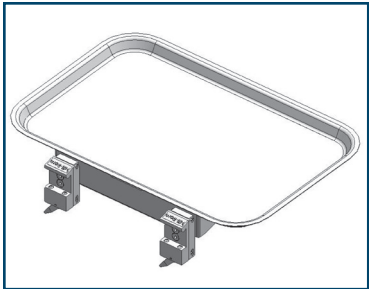
Product No. P17020201



Shelf, Hinged Mayo Tray 13 ⁵/₈\"/>

Product No. P17020301

* Vertical Mount Requires Fairfield Rail



Shelf, Hinged Mayo Tray 17 ¹/₈\"/>

Product No. P17020401

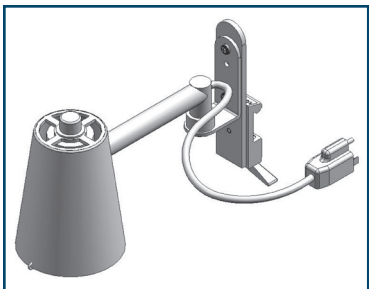
* Vertical Mount Requires Fairfield Rail



Utility Shelf 12\"/>

Product No. P17020501

* Vertical Mount Requires Fairfield Rail

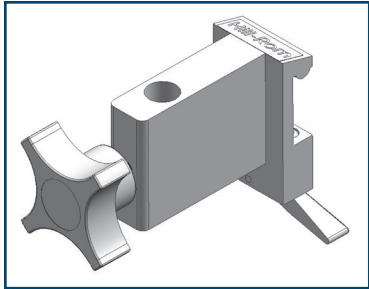


Utility Charting Light with Mount 4 ¹/₂\"/>

Product No. P17030501

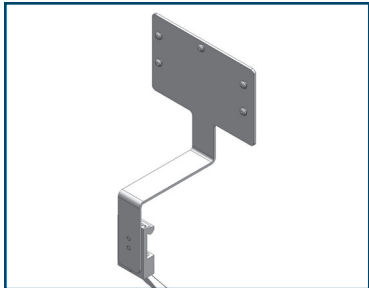
* Horizontal Mount Requires Fairfield Rail

HORIZ. 16" (HEIGHT)	HORIZ. 24" (HEIGHT)	HORIZ. 32" (HEIGHT)	VERT. 16" (WIDTH)	VERT. 24" (WIDTH)	VERT. 32" (WIDTH)
YES	YES	YES			
YES	YES	YES	YES	YES	YES
YES	YES	YES	YES	YES	YES
YES	YES	YES	YES	YES	YES
YES	YES	YES	YES	YES	YES



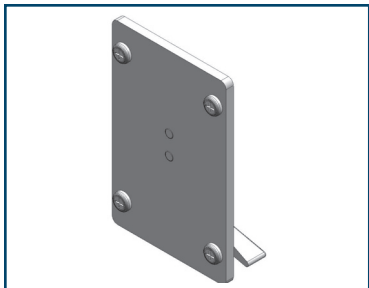
Universal Light Mount
9/16" Diameter Hole

Product No. P17030701
* Vertical Mount Requires Fairfield Rail



Integrated Diagnostic System
(Over Rail Mount)

Product No. P17040101
(Monitor Mount for Welch Allyn Model 767)



Integrated Diag System – 747

Product No. P17040201
* Vertical Mount Requires Fairfield Rail



Speculum Mount

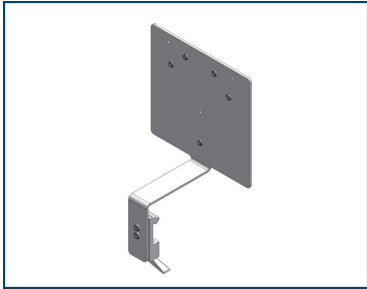
Product No. P17040401
* Vertical Mount Requires Fairfield Rail



Aneroid Sphygmo, Tycos Model
767-01

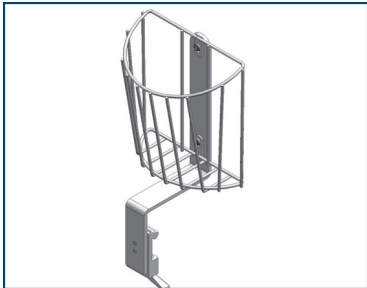
Product No. P17041201X01
Requires (1) P54000863000) Note: Sphygmo Only.
* Vertical Mount Requires Fairfield Rail

HORIZ. 16" (HEIGHT)	HORIZ. 24" (HEIGHT)	HORIZ. 32" (HEIGHT)	VERT. 16" (WIDTH)	VERT. 24" (WIDTH)	VERT. 32" (WIDTH)
YES	YES	YES	YES	YES	YES
YES	YES	YES			
YES	YES	YES	YES	YES	YES
YES	YES	YES	YES	YES	YES
YES	YES	YES	YES	YES	YES



Tycos Model 7670-01 (Over Rail Mount) and Diatrek 6000/9000 Thermometer Mount

Product No. P17041301



Cuff Basket (Over Rail Mount) (Includes P17041701 Mount)

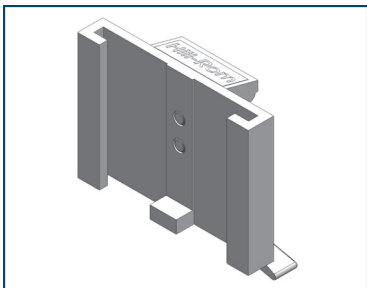
Product No. P17041601



Utility Hook

Product No. P17041801

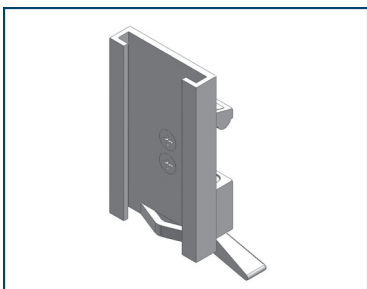
* Vertical Mount Requires Fairfield Rail



Conchatherm Humidifer and Heater – Slide Adapter

Product No. P17043001

* Vertical Mount Requires Fairfield Rail

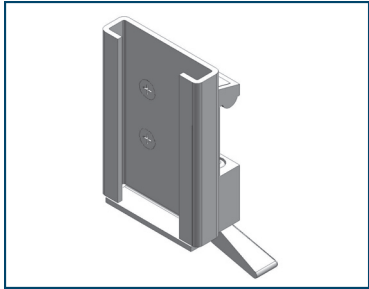


Standard Slide Adapter

Product No. P17070101

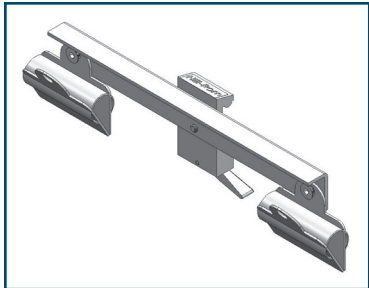
* Vertical Mount Requires Fairfield Rail

HORIZ. 16" (HEIGHT)	HORIZ. 24" (HEIGHT)	HORIZ. 32" (HEIGHT)	VERT. 16" (WIDTH)	VERT. 24" (WIDTH)	VERT. 32" (WIDTH)
YES	YES	YES			
YES	YES	YES			
YES	YES	YES	YES	YES	YES
YES	YES	YES	YES	YES	YES
YES	YES	YES	YES	YES	YES



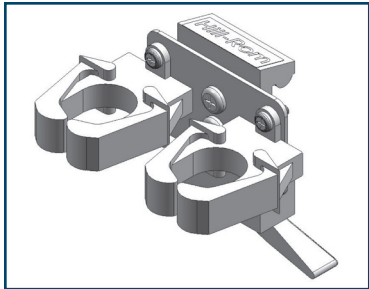
**Bird Blender Slide
(Front of Rail)**

Product No.P17070201
* Vertical Mount Requires Fairfield Rail



Dual Clip ASSY

Product No. P17071001
* Vertical Mount Requires Fairfield Rail



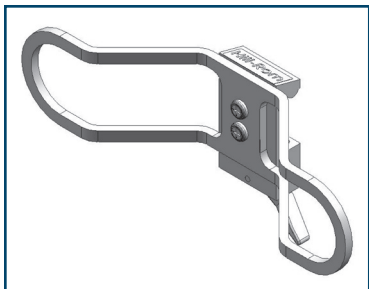
**Cable Organizer
(Mounts on P662A0701)**

Product No. P17072001
* Vertical Mount Requires Fairfield Rail



Vertical Cord Wrap

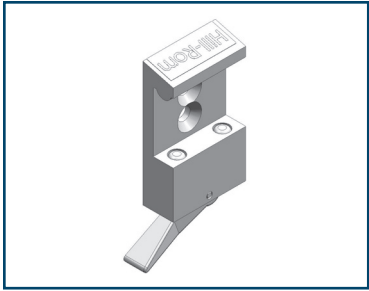
Product No. P17073001
* Vertical Mount Requires Fairfield Rail



Horizontal Cord Wrap

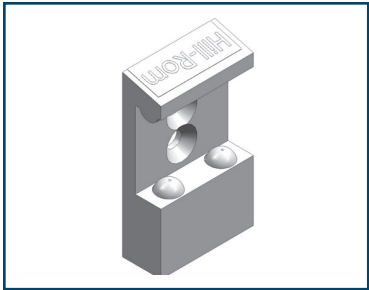
Product No.P17073101
* Vertical Mount Requires Fairfield Rail

HORIZ. 16" (HEIGHT)	HORIZ. 24" (HEIGHT)	HORIZ. 32" (HEIGHT)	VERT. 16" (WIDTH)	VERT. 24" (WIDTH)	VERT. 32" (WIDTH)
YES	YES	YES	YES	YES	YES
YES	YES	YES	YES	YES	YES
YES	YES	YES	YES	YES	YES
YES	YES	YES	YES	YES	YES
YES	YES	YES	YES	YES	YES



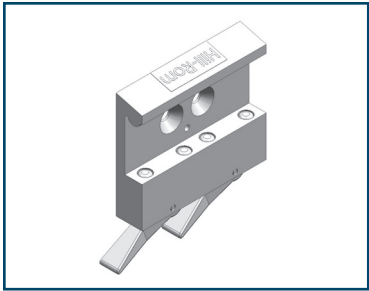
Standard Cam Adapter

Product No. P17074001
* Vertical Mount Requires Fairfield Rail



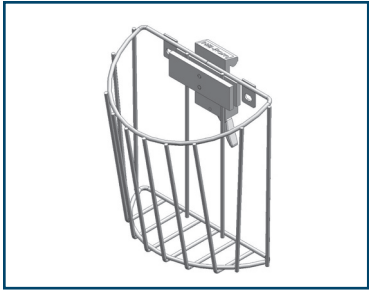
Ball Action Adapter

Product No. P17074101
* Vertical Mount Requires Fairfield Rail



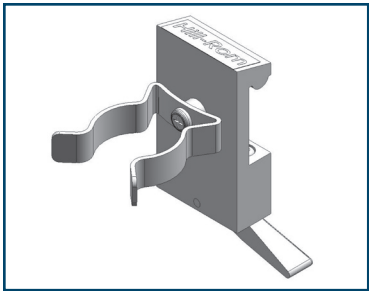
Double Cam Adapter

Product No. P17074201
* Vertical Mount Requires Fairfield Rail



Cuff Basket with Mount

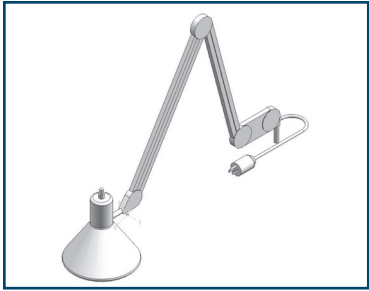
Product No. P53311030000
* Vertical Mount Requires Fairfield Rail



Resuscitator Holder

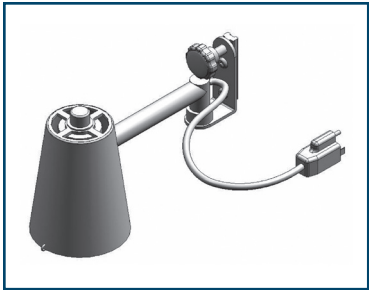
Product No. P53321121000
* Vertical Mount Requires Fairfield Rail

HORIZ. 16" (HEIGHT)	HORIZ. 24" (HEIGHT)	HORIZ. 32" (HEIGHT)	VERT. 16" (WIDTH)	VERT. 24" (WIDTH)	VERT. 32" (WIDTH)
YES	YES	YES	YES	YES	YES
YES	YES	YES	YES	YES	YES
YES	YES	YES	YES	YES	YES
YES	YES	YES	YES	YES	YES
YES	YES	YES	YES	YES	YES



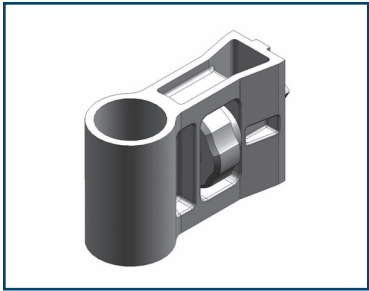
**Arm Light with 25W
Compact Fluorescent**

Product No. P963D01
(Requires (1) P100803)



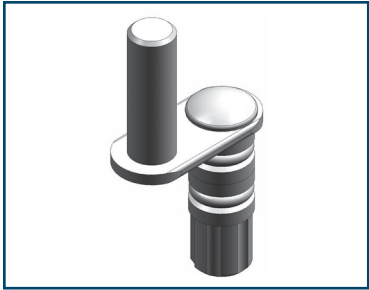
**Light, Utility Track Mounted
(40 Watt Bulb NOT Included)**

Product No. P966A00



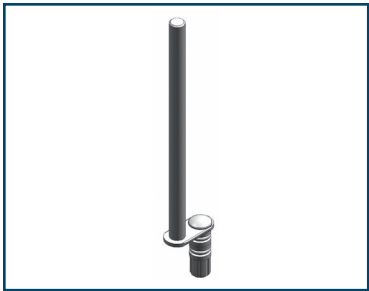
Universal Holder

Product No. P970A01



Post Type Utility Mount 6" Long

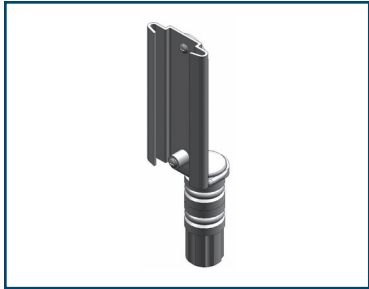
Product No. P972-01
(Requires (1) P970A01) or P17000601, with Fairfield Rail



**Post Type Utility Mount
12" Long**

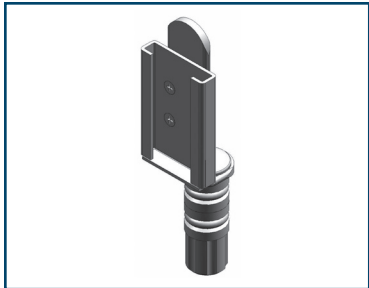
Product No. P972L01
Requires (1) P970A01) or P17000601, with Fairfield Rail

HORIZ. 16" (HEIGHT)	HORIZ. 24" (HEIGHT)	HORIZ. 32" (HEIGHT)	VERT. 16" (WIDTH)	VERT. 24" (WIDTH)	VERT. 32" (WIDTH)
YES	YES	YES	YES	YES	YES
YES	YES	YES	YES	YES	YES
YES	YES	YES	YES	YES	YES
YES	YES	YES	YES	YES	YES



Utility, Slide Mount

Product No. P973-01
Requires (1) P970A01, or P17000601, with Fairfield Rail



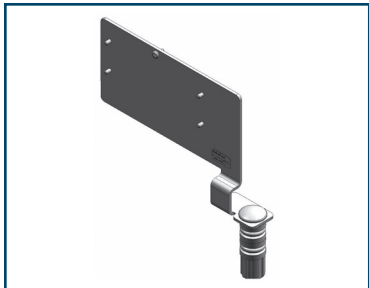
Bird Blender Mount

Product No. P973-B1
Requires (1) P970A01, or P17000601, with Fairfield Rail



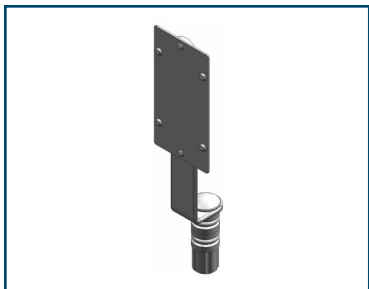
Cable Organizer

Product No. P973-C1
Requires (1) P970A01, or P17000601, with Fairfield Rail



Utility, Otoscope Mount

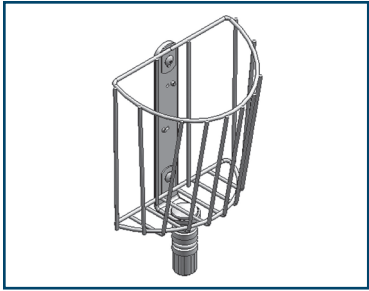
Product No. P973-S1
Requires (1) P970A01, or P17000601, with Fairfield Rail



Ophthalmoscope Mount

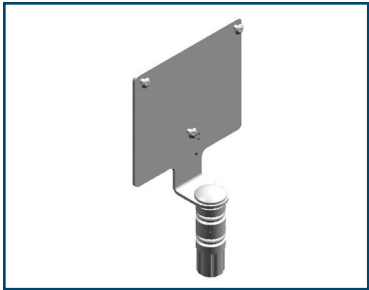
Product No. P973-S2
Welch Allyn 767 Requires (1) P970A01, or P17000601, with Fairfield Rail

HORIZ. 16" (HEIGHT)	HORIZ. 24" (HEIGHT)	HORIZ. 32" (HEIGHT)	VERT. 16" (WIDTH)	VERT. 24" (WIDTH)	VERT. 32" (WIDTH)
YES	YES	YES	YES	YES	YES
YES	YES	YES	YES	YES	YES
YES	YES	YES	YES	YES	YES
YES	YES	YES	YES	YES	YES
YES	YES	YES	YES	YES	YES



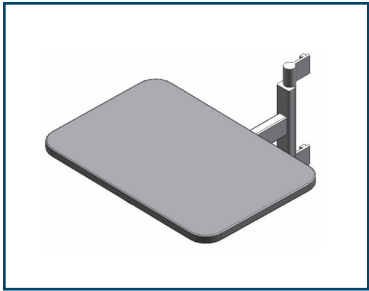
Basket, Aneroid

Product No. P975-01
Requires (1) P970A01, or P17000601, with Fairfield Rail



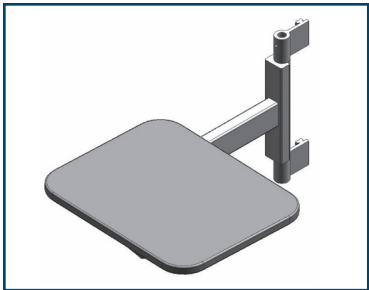
Aneroid Sphygmo Mount for Welch Allyn 7670-01

Product No. P975A01
Requires (1) P970A01, or P17000601, with Fairfield Rail



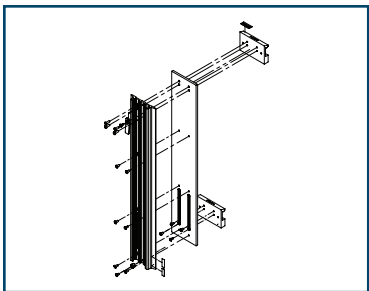
Large Shelf, Swivel

Product No. P986-03BM07



Small Shelf, Swivel

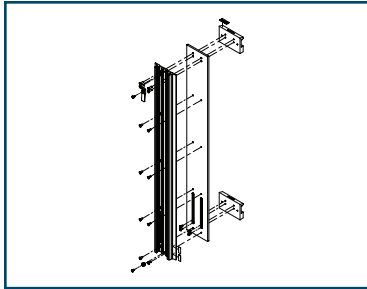
Product No. P986S01BM07



GCX Monitor Track for 16" Horizontal

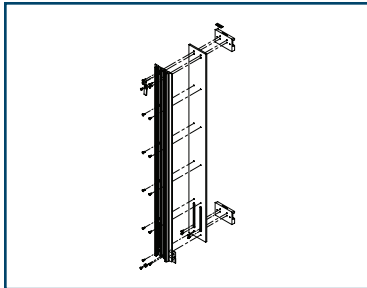
Product No. P171101

HORIZ. 16" (HEIGHT)	HORIZ. 24" (HEIGHT)	HORIZ. 32" (HEIGHT)	VERT. 16" (WIDTH)	VERT. 24" (WIDTH)	VERT. 32" (WIDTH)
YES	YES	YES	YES	YES	YES
YES	YES	YES	YES	YES	YES
YES	YES	YES	YES	YES	YES
YES	YES	YES	YES	YES	YES
YES					



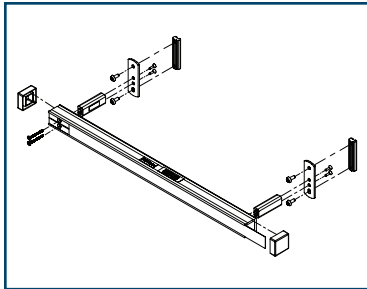
***GCX Monitor Track
for 24" Horizontal***

Product No. P171102



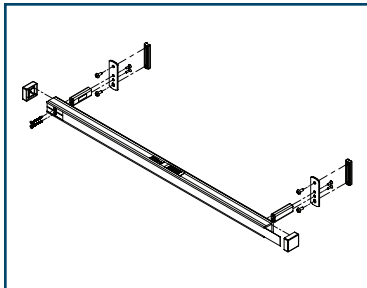
***GCX Monitor Track
for 32" Horizontal***

Product No. P171103



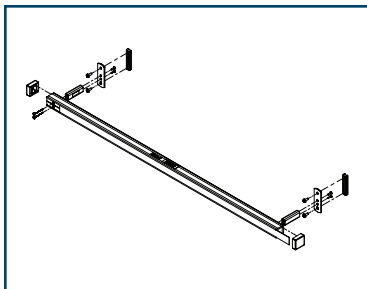
***Fairfield Rail
for 16" Vertical***

Product No. P171301



***Fairfield Rail
for 24" Vertical***

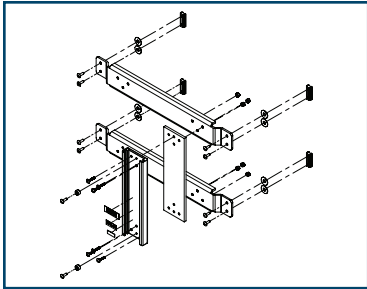
Product No. P171302



***Fairfield Rail
for 32" Vertical***

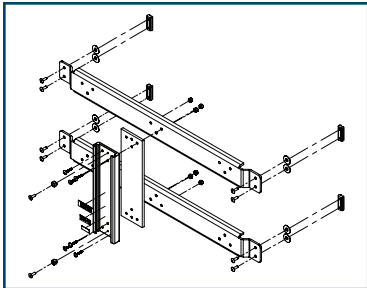
Product No. P171303

HORIZ. 16" (HEIGHT)	HORIZ. 24" (HEIGHT)	HORIZ. 32" (HEIGHT)	VERT. 16" (WIDTH)	VERT. 24" (WIDTH)	VERT. 32" (WIDTH)
	YES				
		YES			
			YES		
				YES	
					YES



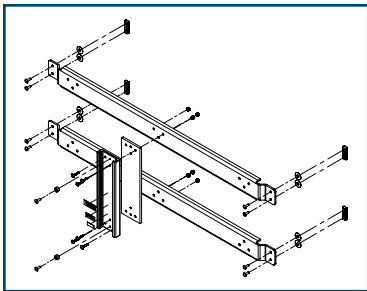
**GCX Monitor Track
for 16" Vertical**

Product No. P171201



**GCX Monitor Track
for 24" Vertical**

Product No. P171202



**GCX Monitor Track
for 32" Vertical**

Product No. P171203

HORIZ. 16" (HEIGHT)	HORIZ. 24" (HEIGHT)	HORIZ. 32" (HEIGHT)	VERT. 16" (WIDTH)	VERT. 24" (WIDTH)	VERT. 32" (WIDTH)
			YES		
				YES	
					YES

WittRock reserves the right to make changes without notice in design, specifications and models. The only warranty WittRock makes is the express written warranty extended on the sale or rental of its products.

©2012 WittRock Services, Inc. ALL RIGHTS

RESERVED. ORDER NUMBER 179482 rev 1 E ENG – US

12/13/2012

Zinc Number US-AC-1212-0072

www.wittrockhc.com

812.222.0373